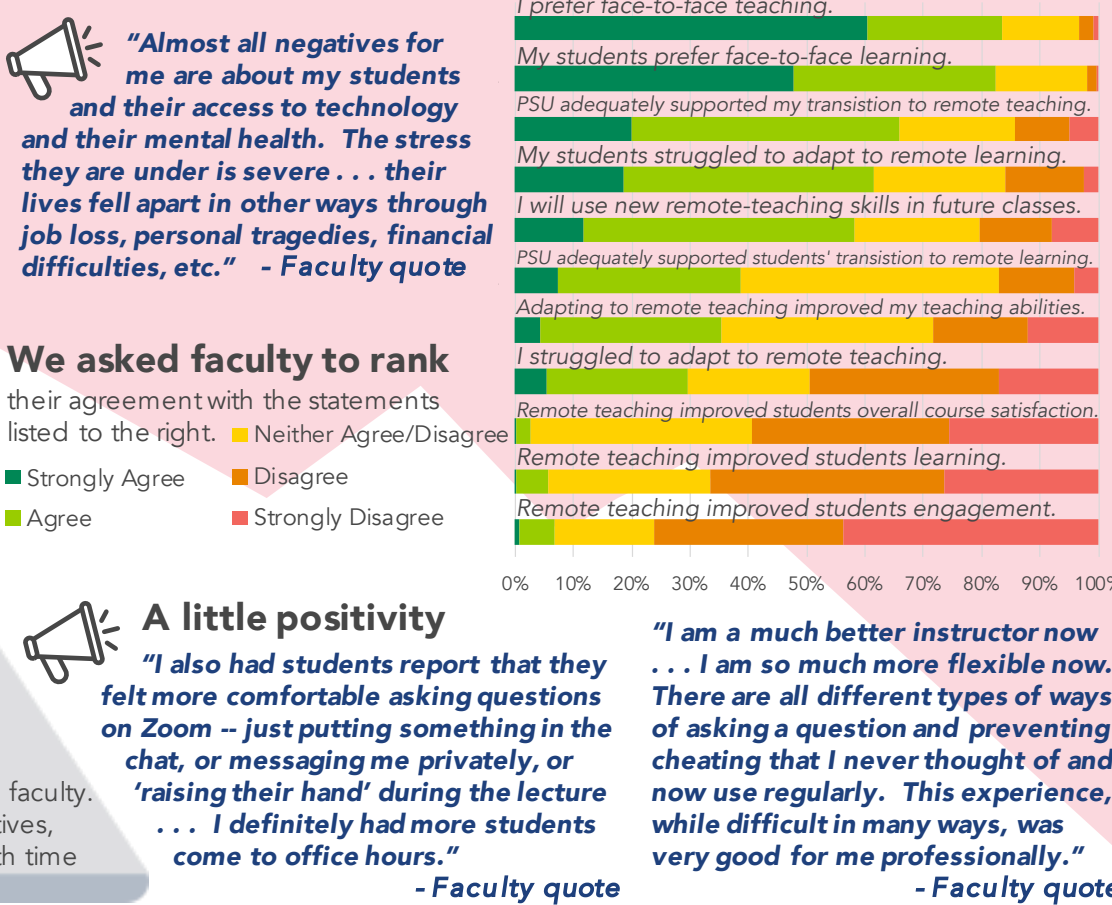
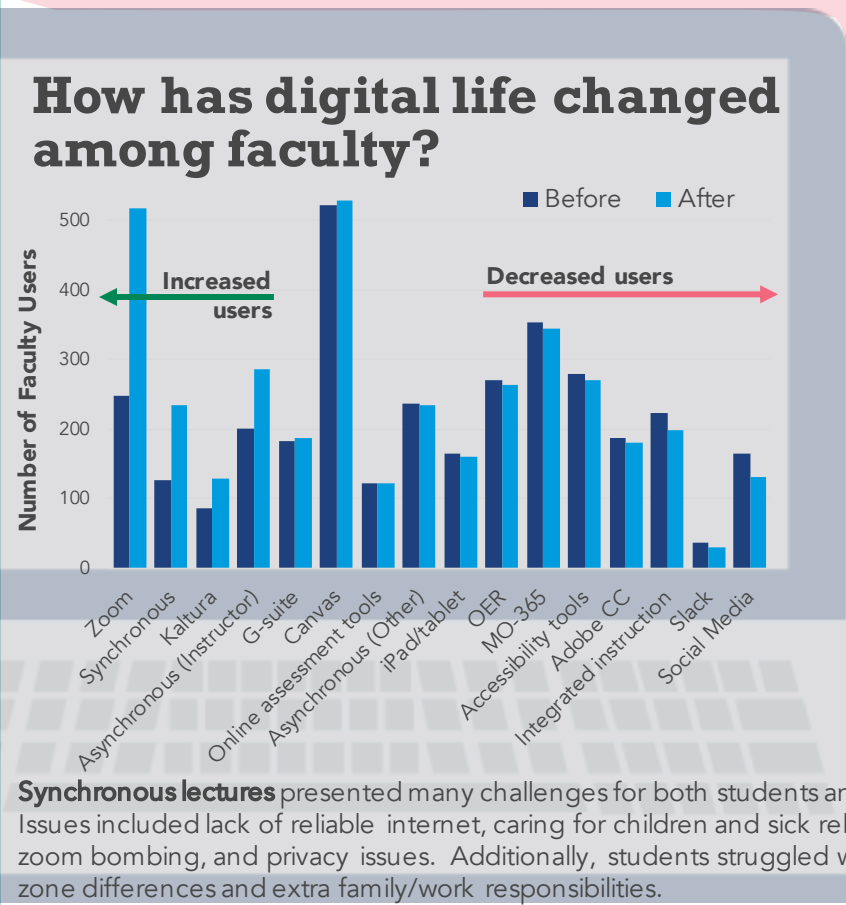
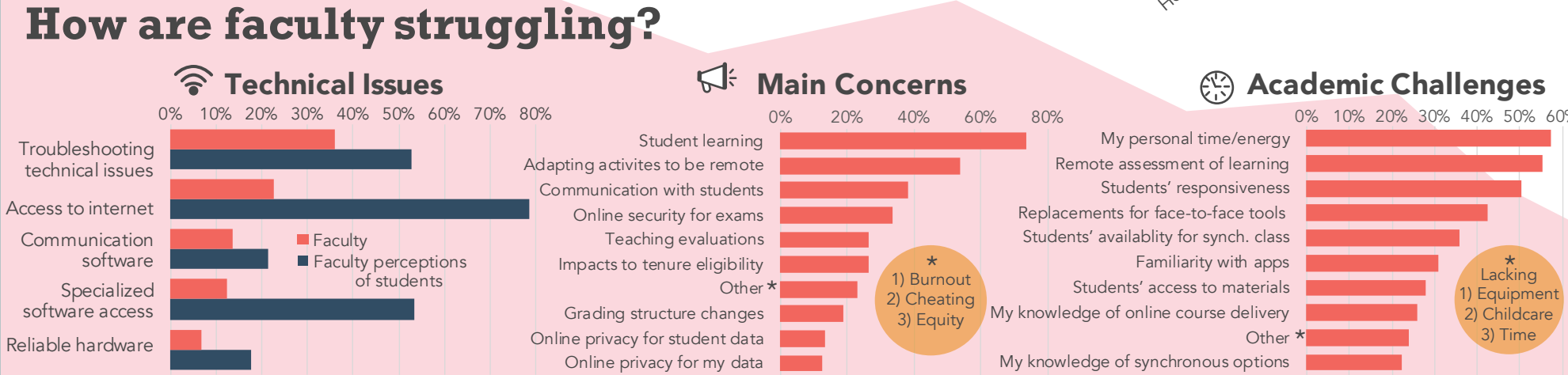
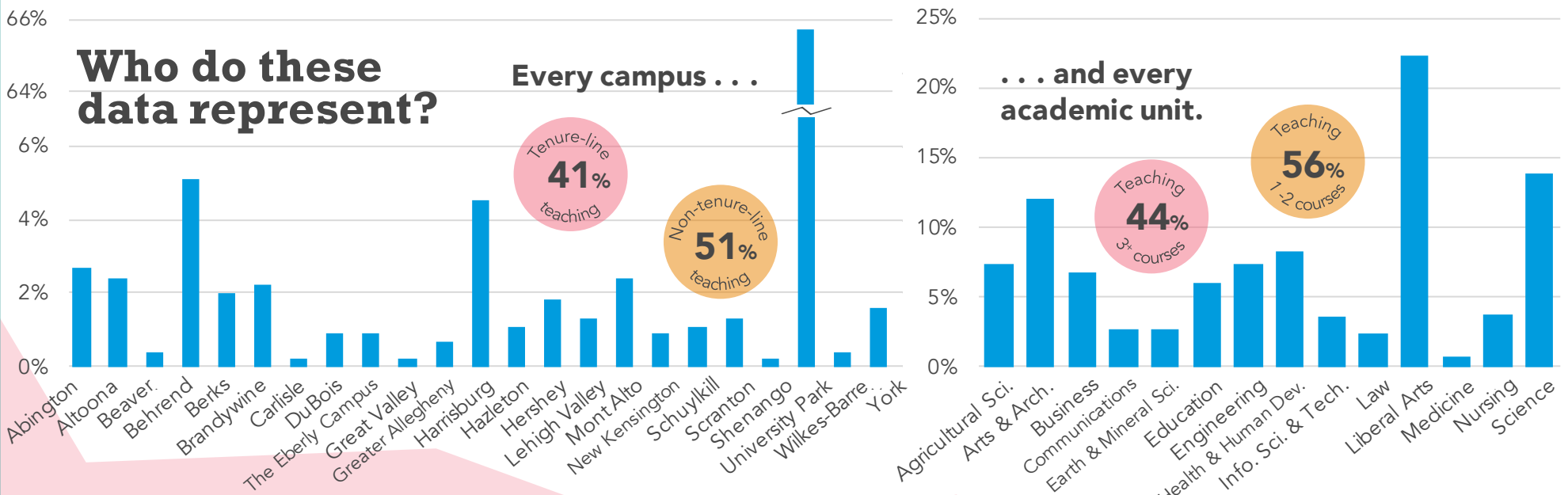




What **faculty** are saying about: The Switch to Remote Teaching

Report prepared by Alex Serpi (alex.serpi@psu.edu) and Jenay Robert (principal investigator, jrr296@psu.edu). 20May2020.
An IRB-approved survey of 576 faculty, administered from April 26th - May 8th, measured effects of the Coronavirus shutdown. It was distributed via Canva and email.



How can Penn State reach and assist faculty?

