

PENNSSTATE



Harrisburg

TMI and the Mid Atlantic Supply Chain Hub

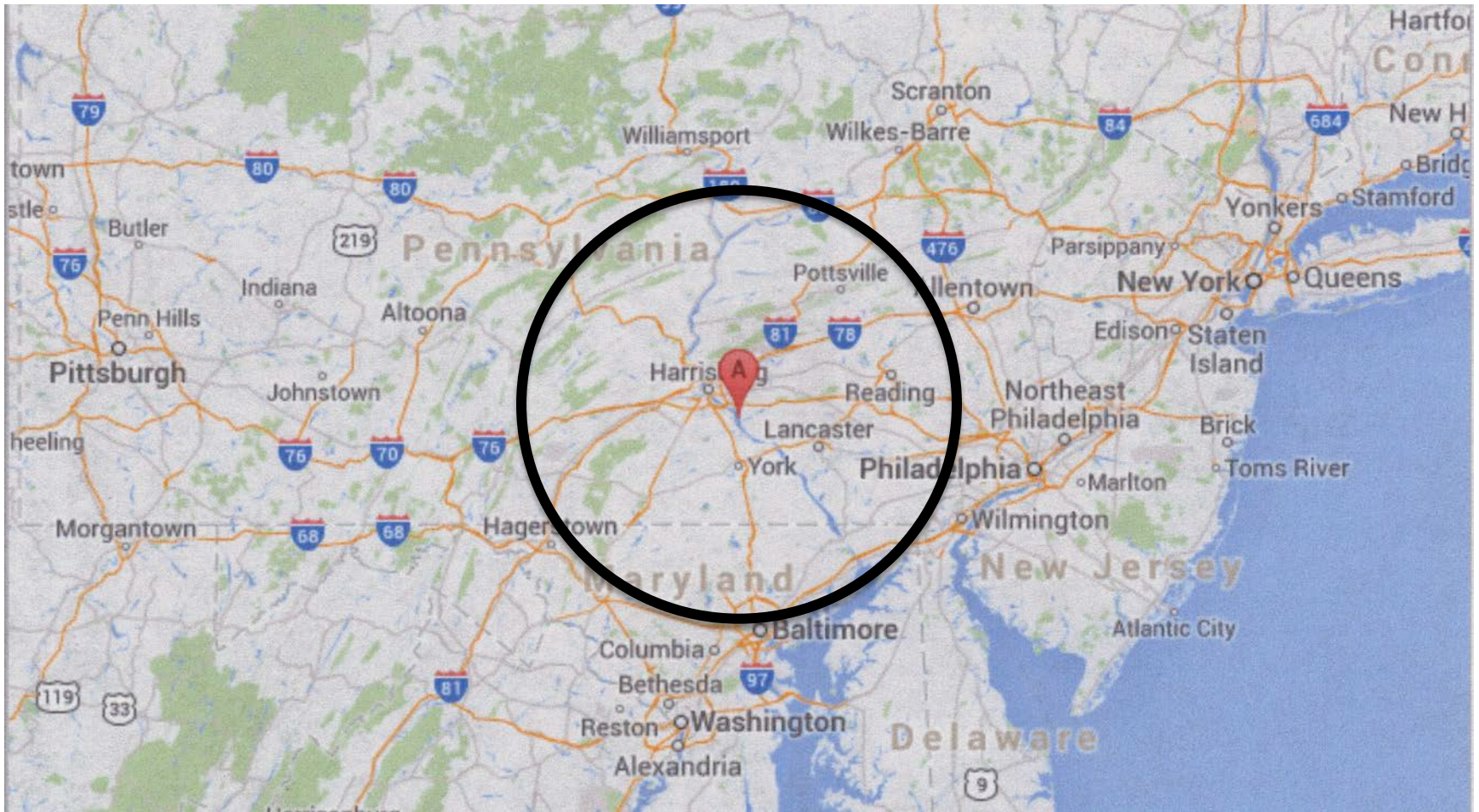
Richard R. Young, Ph.D., FCILT
Professor of Supply Chain Management
School of Business Administration

Research Interests

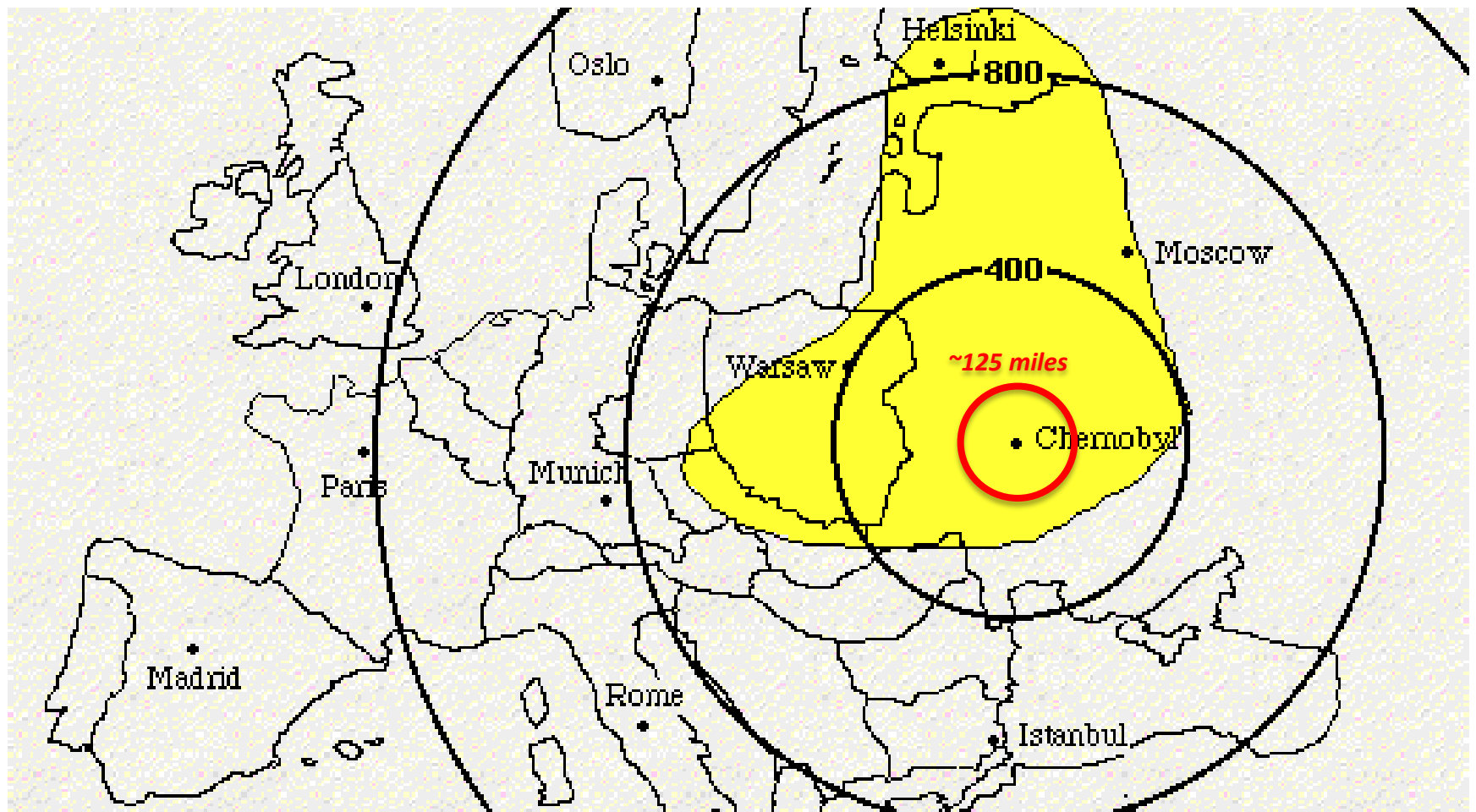
- Threats to supply chain infrastructure*
- Nature of multi-modal threats
- Economic growth and threat vulnerability
- Threats then and threats now

*General research theme: J. Plant and R. Young, “Threats to Railroad Infrastructure”

TMI – 100 km radius

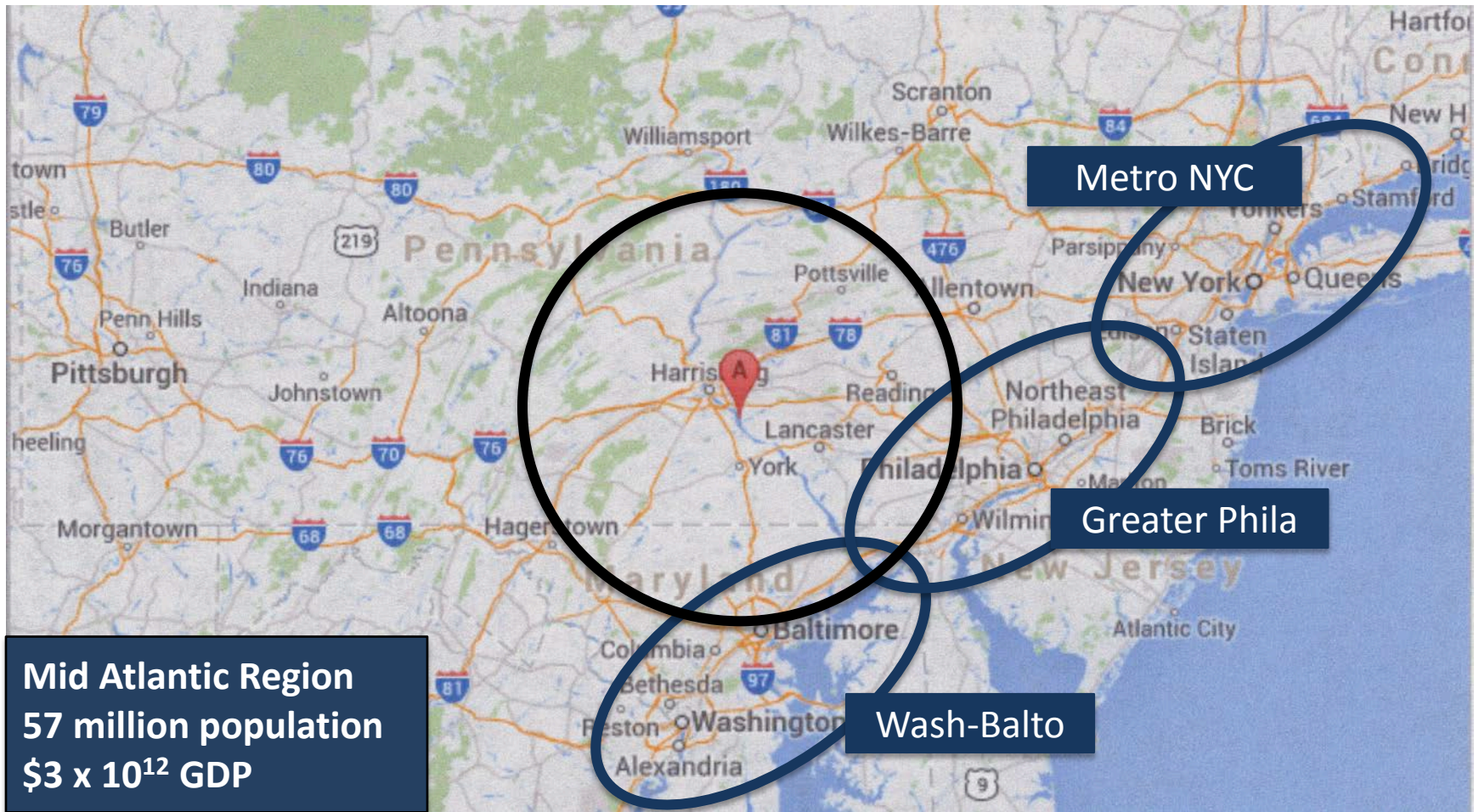


TMI Compared to Chernobyl



Source: ["The Chernobyl Accident and its Consequences."](#)

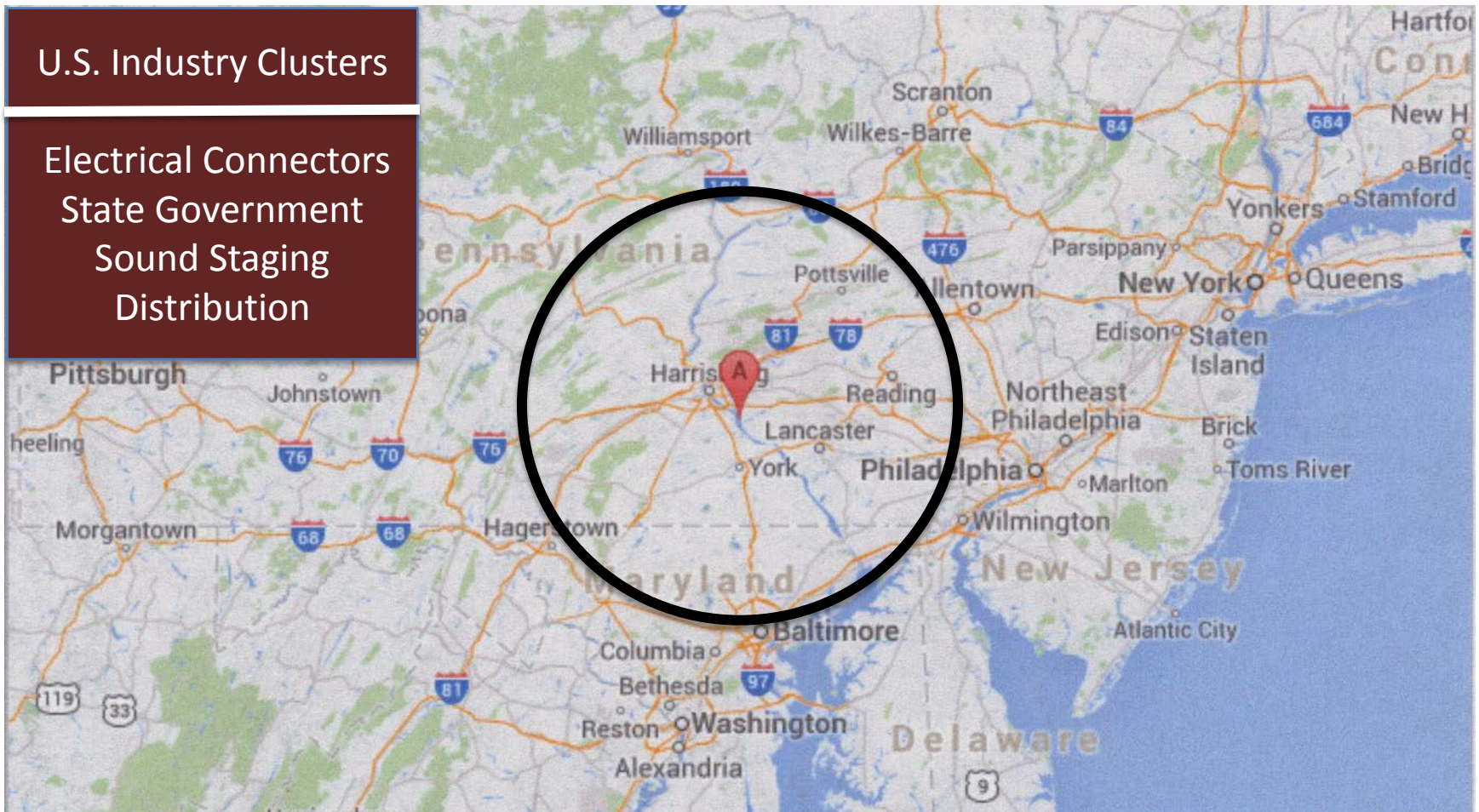
TMI – Proximity to Key NE Populations



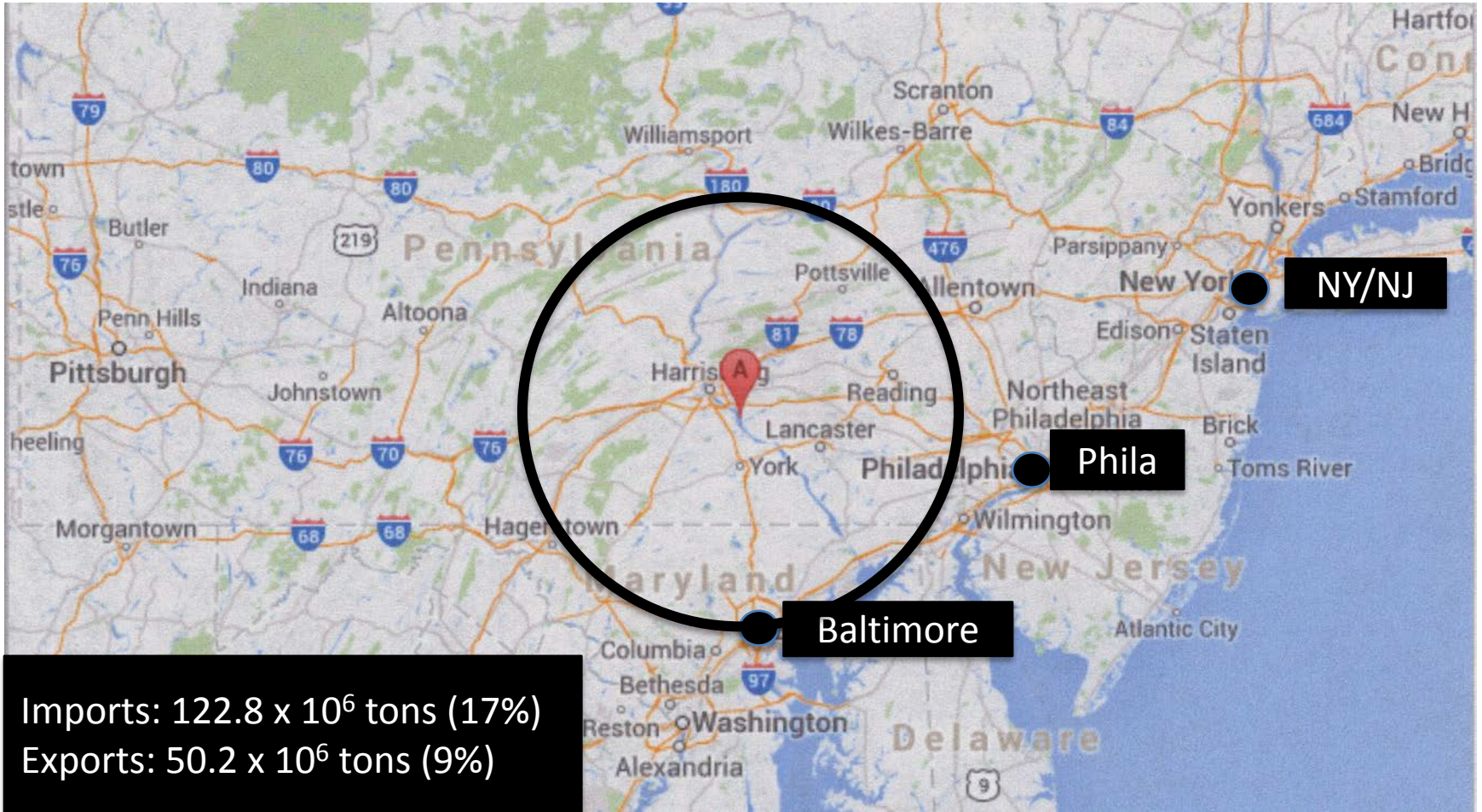
TMI – Key vulnerability

U.S. Industry Clusters

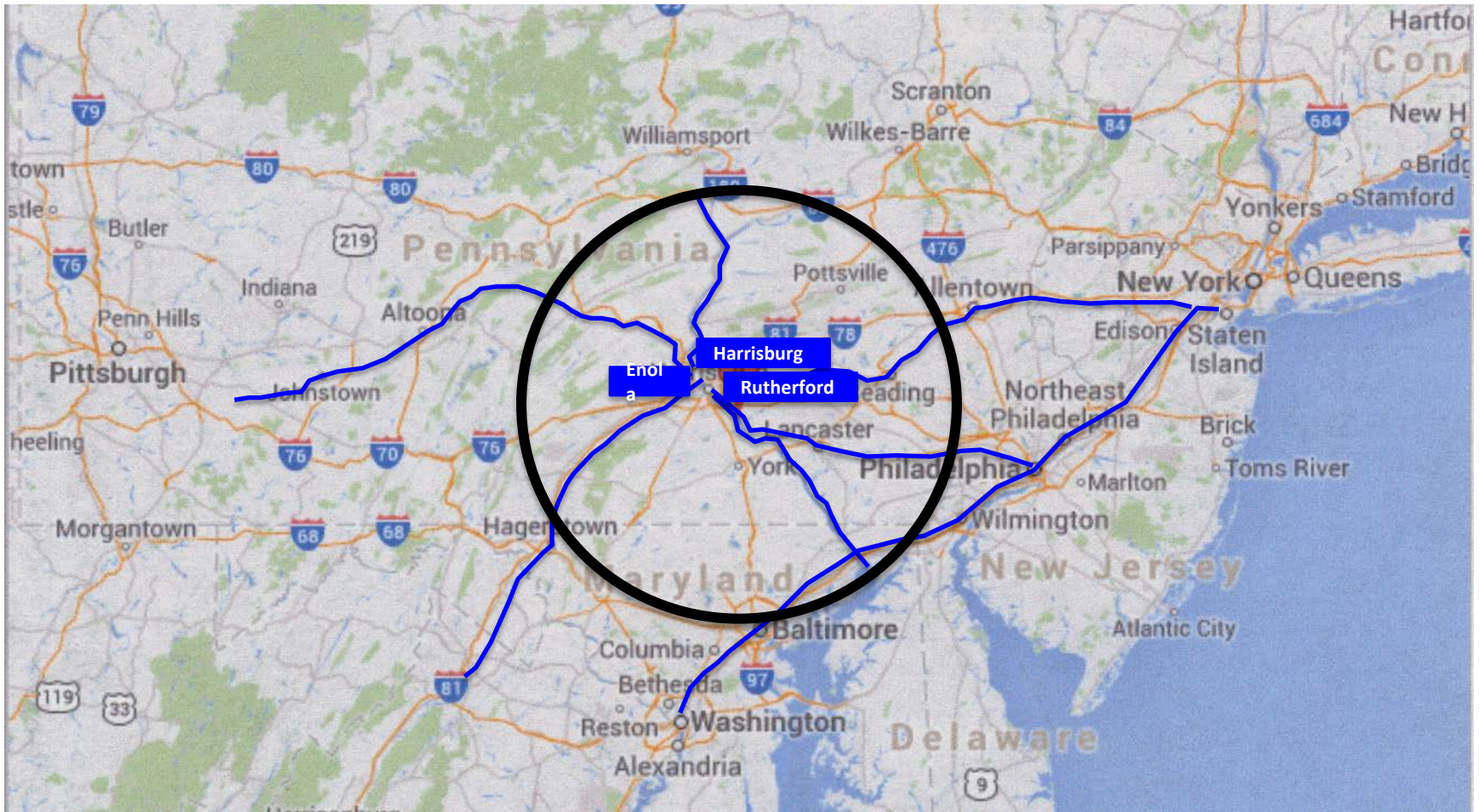
Electrical Connectors
State Government
Sound Staging
Distribution



TMI – Proximity to Major Ports

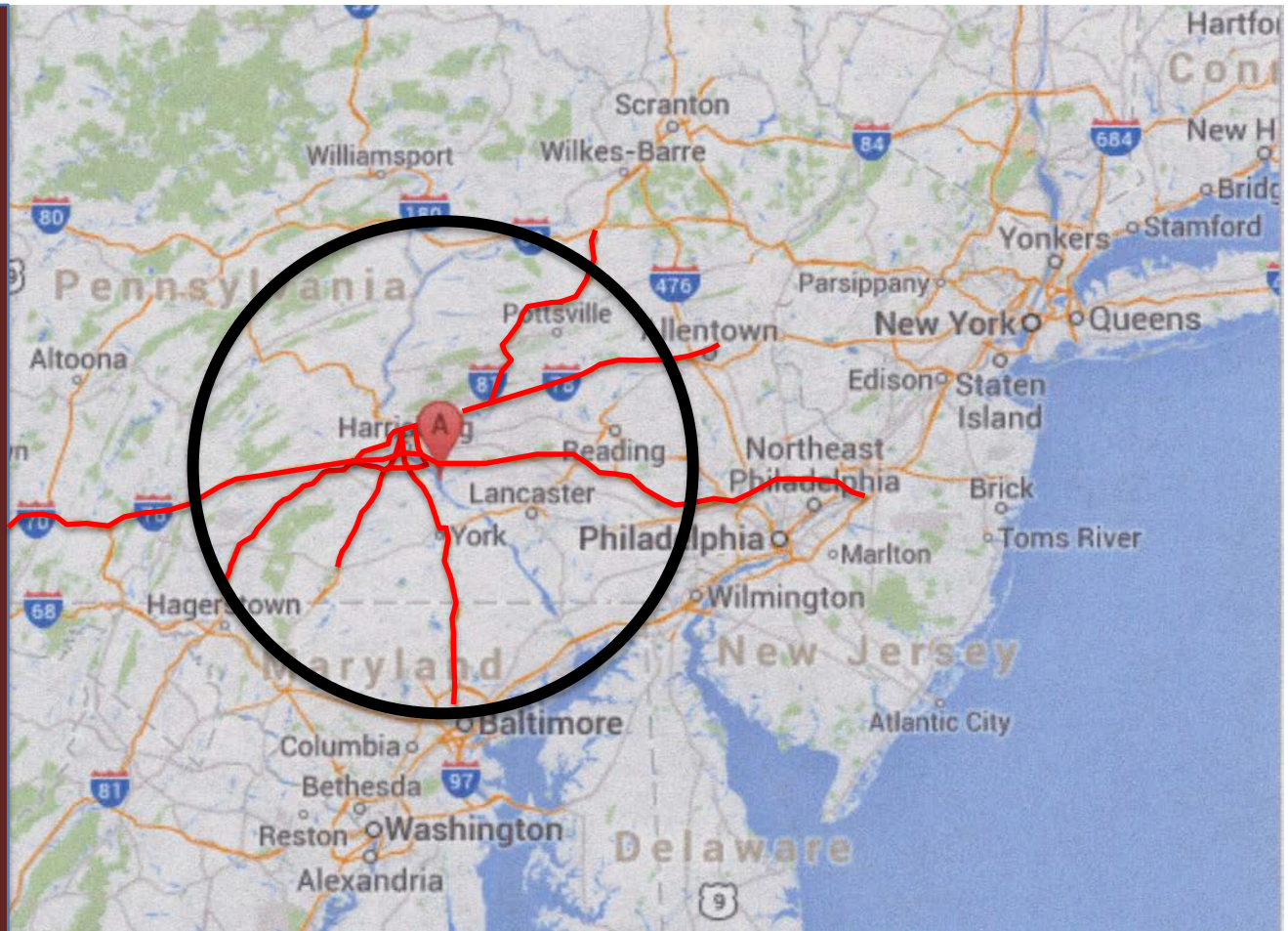


South Central PA: Class I Railroads



South Central PA: Mid Atlantic Distribution Hub

Advance Auto Parts
Amazon
Armstrong
Arnold
Caterpillar
Defense Logistics Agency
DSC (Kellogg's)
Hershey's
Johnson & Johnson
Lowe's
M&M/Mars
Nestle
Nordstrom*
Ollie's
Perrier
Suzuki
U.S. Navy
Walgreen's
Walmart
Wegman's
Whirlpool

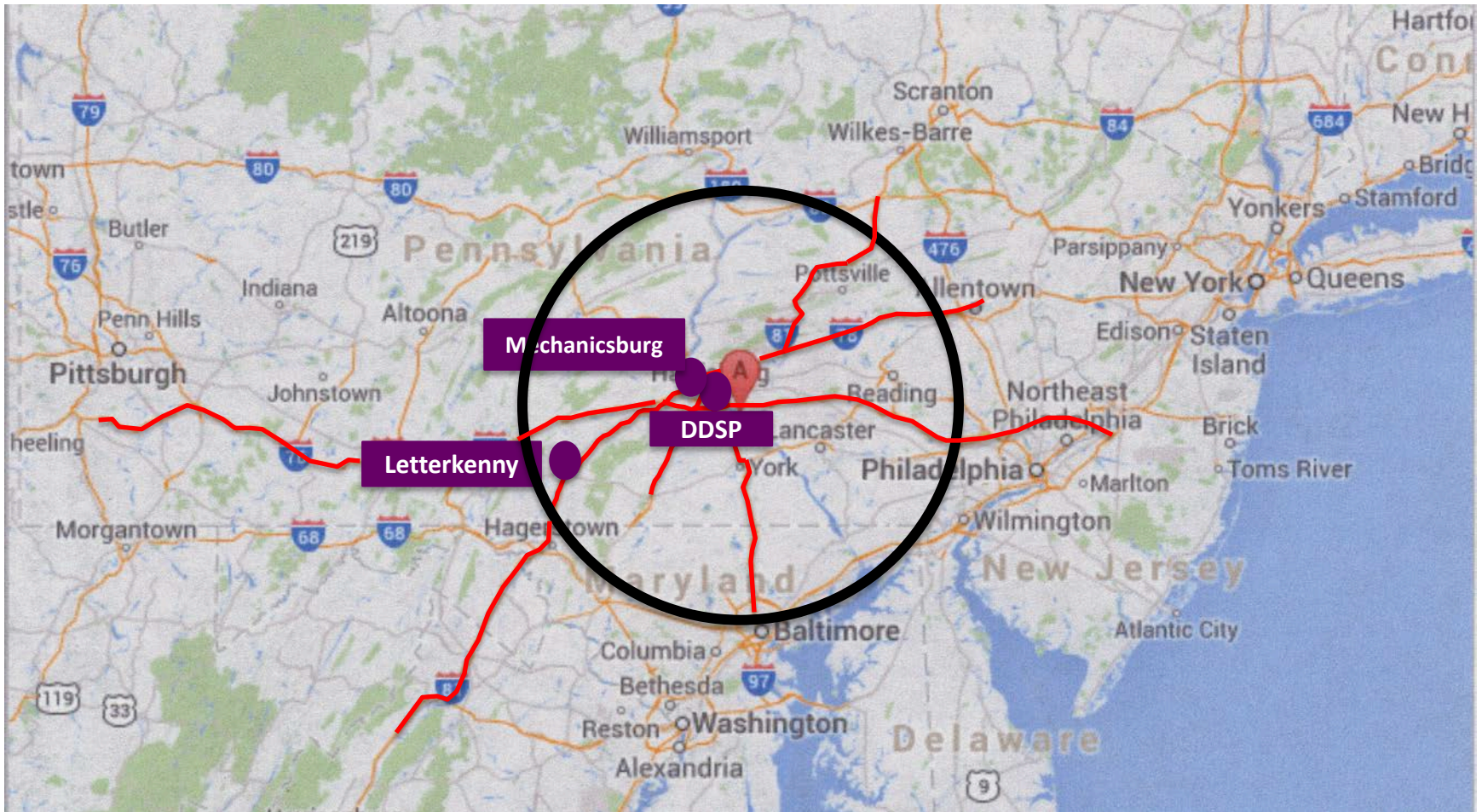


Central PA Distribution Facilities

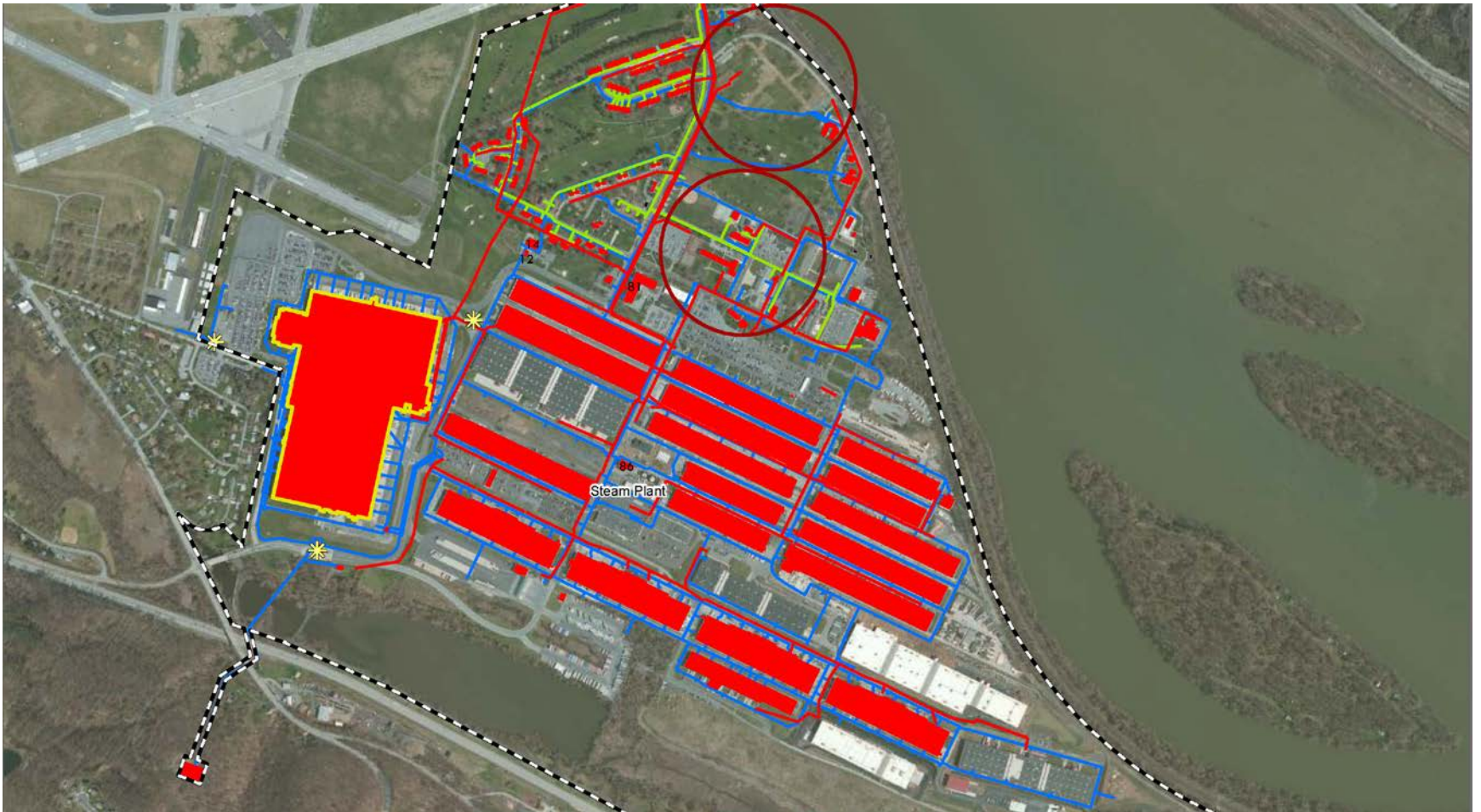


Source: www.wikimapia.com

South Central PA: Defense Distribution Hub

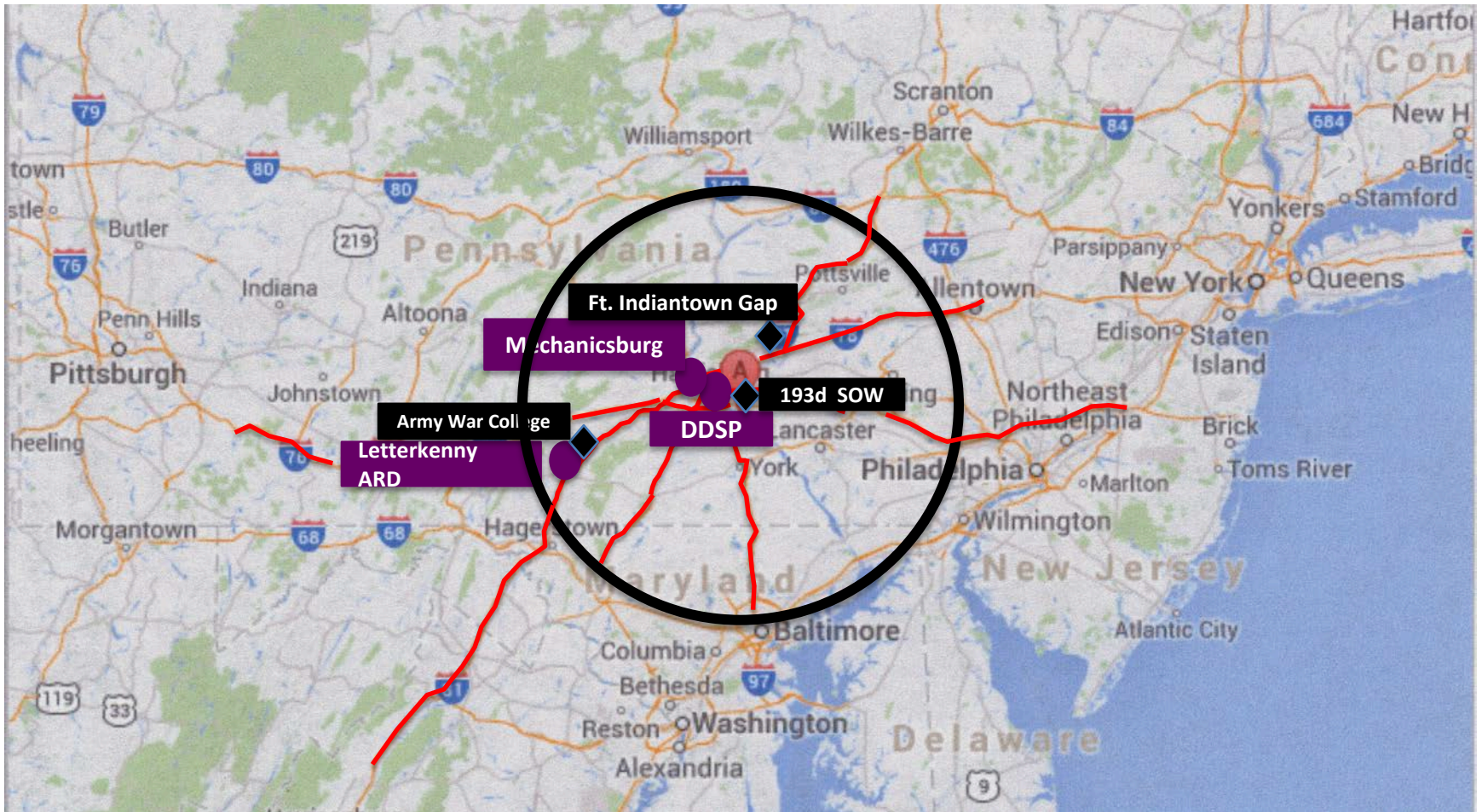


DDSP (New Cumberland)



Source: www.hdrinc.com

South Central PA: Military Presence



Conclusions

- PA is called the “keystone state” for a reason
- Importance has grown exponentially during the past 35 years
- In 1979 south central PA was not the supply chain hub that it is now
- There are many threats to supply chain infrastructure, TMI is just one of many